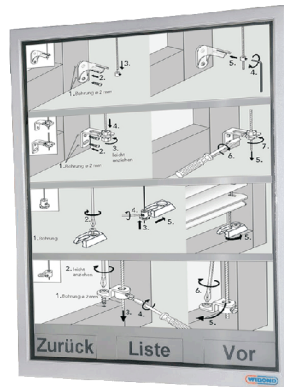


EXPOSE

TYP MEI 19 DT PROSCREEN 19"-DESKTOP-MONITOR

Features

- 19" monitor incl. touch
- 1,6 GHz-Intel®-Atom™-Technology
- RAM 1GByte, Flash 2GByte
- WINDOWS XP embedded
- Resolution: 1.024x1.280 pixels
- Colors: 16.78 million
- Reading angle v/h: 178°
- Brightness: 300 cd/m²
- Contrast: 1300 :1
- Integrated interfaces: 2 x Ethernet, 2 x USB, 1x RS232, 1 x VGA-output,
- Mounting via VESA 100
- Protection class IP54 on the front side
- Operating voltage: 18-36VDC



Advantages

- Trouble-free integration into existing networks
- Excellent readability at each side
- High resolution
- Freely configurable virtual touch keyboard
- All connections accessible from the outside
- Manual backlight control
- Backlight timer
- Time controlled backlight
- Low power consumption: Eco-Design
- Quality "Made in Germany"

Options

- Switching inputs for recording measured values or pulses
- Switching outputs to control external components (e.g. horn / signal lamp, etc.)
- Screen sizes from 15" up to 65"
- Without touch screen
- Wall and ceiling mounting
- Flexible arm-mounting for individual adjustment of inclination
- Case finish in any RAL color
- Connection of additional interfaces e.g. PROFINET, PROFIBUS, etc.
- Audio OUT (line out / 2 x 5W)
- DCF and temperature interface
- Operating voltage 100-240VAC

Applications

- Visualization of production data
- Control Panel
- Meeting point
- Authority-information-system
- Factory-master-control-systems
- Logistic information

Technical data

Display resolution (w x h)	1.024 x 1.280 pixels (SXGA)
Screen size	19" (482,6 mm)
Reading angle vertical/horizontal	178°
Colors	about 16,78 Mio.
Operating voltage	18-36VDC
Power input (typ.)	45 W
Power input ("Backlight Off")	15 W
PC-component CPU	1,6 GHz Intel®-Atom™-Technology
PC-component RAM	1 GByte
PC-component Flash Disk	2 GByte (optional 160 GByte HDD 24/7)
Operating system	Windows XP embedded (optional WIN 7 or WIN XP)
WLAN-interface	Rod antenna; protocol 802.11b/11g/11n / 300MBit
WLAN-coding	WEP64/128, WPA, TKIP, AES
WLAN-functions	QOS-WMM, WMM-PS, PIN, PBC
Ethernet-interfaces	2 x RJ45 / 1 GBit
USB-interfaces	2 x USB V 2.0
Serial interface	RS232
Case mounting	VESA 100
Case dimensions (width x height)	about 330 mm x 400 mm
Temperature area	0 - 40 °C
Relative humidity	0 - 90 % not condensed
Weight	about 8,2 kg
Case material	sheet steel (powder coated)
Case color	on the front: RAL9006 (with aluminium) on the back: RAL9005 (deep black)
Case protection class	IP54 (on the front) IP20 (on the back)
Electrical safety	DIN EN 60950-1
Radiated interference	DIN EN 61000-6-3
Interference immunity	DIN EN 61000-6-2
Lifetime backlight	50.000 h
Type	U1-10528-D54